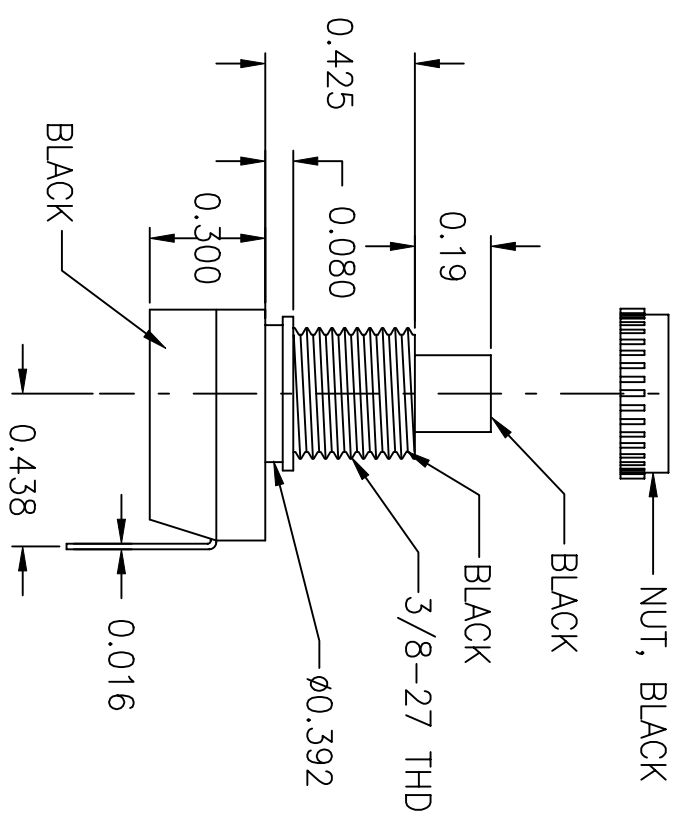
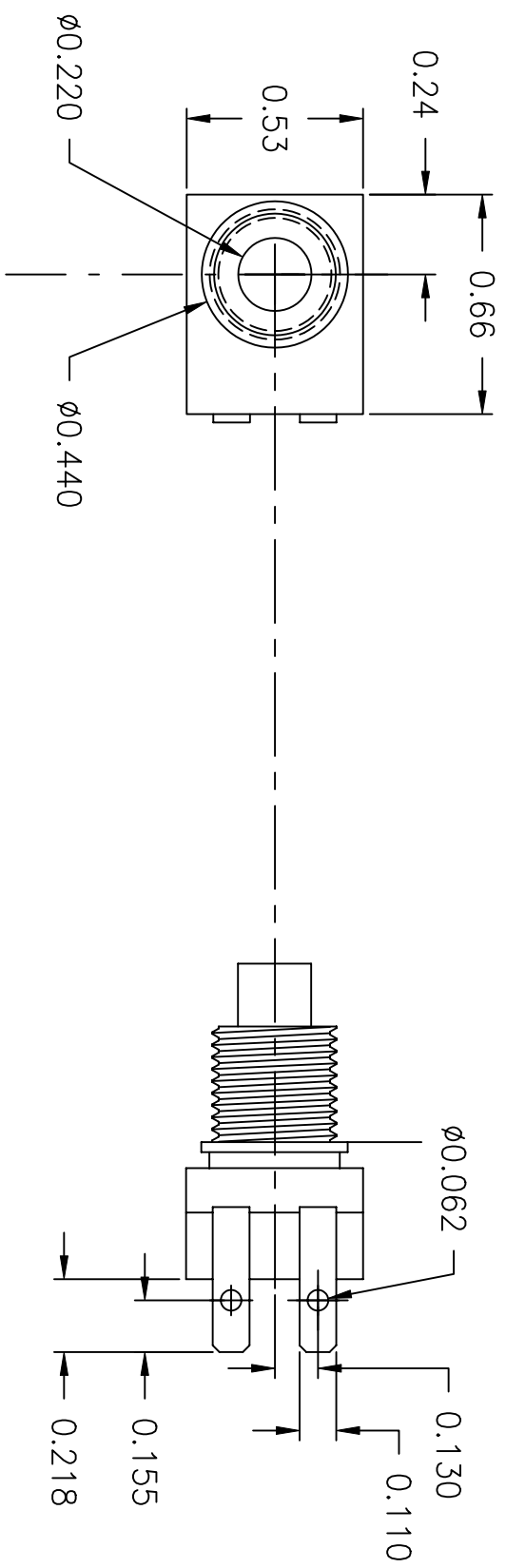


LTR	EN	DESCRIPTION	APPR	BY	DATE
A	-	INITIAL RELEASE	RB	DC	06-24-03



JUDCO INVENTORY NO. 40-3425-03
 SWITCH TYPE: MOMENTARY NORMALLY OPEN
 UL ELECTRICAL RATING: 125VAC, 3A-1, 2A-1
 UL TEMPERATURE RATING: 65°C
 NUTS PACKED SEPARATELY.

CUSTOMER: DIGI-KEY CORPORATION

APPROVED BY: _____
 DATE: _____

DIMENSIONS IN INCHES DIMENSIONS ARE REFERENCE		
DRAWN: DC 06-24-03		
APPR: KJ 06-24-03	DWG. NO. 1415-425	TITLE HARBOR CITY CALIFORNIA OUTLINE J-188A-2S 512
1415U425A.DWG	SHEET	1 OF 1

This document embodies a product, component, and/or design proprietary to JUDCO MANUFACTURING INC., and which is protected either as a trade secret, by U.S. Patent, or by copyright. It may not be used in any way without written express consent of JUDCO MANUFACTURING INC.